

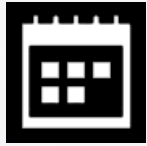
# **Ribermold**

High Precision Molds



**“Always doing better  
what we do best”**

# ABOUT US



**1987**  
Foundation



**100**  
Employees



**9500m<sup>2</sup>**  
Covered area  
(molds production  
and testing  
production center)



**42000m<sup>2</sup>**  
Total area



**15 tons**  
**1500x1100x1100mm**  
Max. capacity



**ISO 9001:2015**  
Quality Certification



**IATF16949**  
Quality Certification



**2021 Exports\*: 95%**

# COMMUNICATION

## MISSION

To combine technology development and know-how in order to ensure our customers a high value-added product and exceed their expectations.

Manufacture and tryouts of high precision molds injection of plastic parts.

Full follow-up of the project, since the idea until the supply of the final product.

## VISION

Ribermold has acquired a sound position in the mold industry and aims to consolidate itself in the production of plastic parts and strengthen its leadership ensuring customers trust, supported by its technology and know-how.





# COMMUNICATION

## VALUES

Daily work at Ribermold is based on the following principles:

**Excellence and trust.** Ribermold's priority is to provide a standout and trustful service, ensuring quality and efficiency. Always doing better what we do best.

**Customer satisfaction.** Working as a partner with our customers, presenting innovative solutions to exceed their expectations. Our customers' success is Ribermold's success.

**Innovation.** Keep investing on IT, communication, production and logistics.

**Human Value.** Ensure a steady qualification of our workers, embracing different skills in order to provide a higher quality service, respecting safety standards and promoting professional motivation, fulfilment and team spirit.

**Environment and safety.** Ribermold's conduct reflects its ethics towards environmental and safety standards of all concerned parties.

**Social responsibility.** Supporting social and cooperative organizations, at regional and national level.

# COMMUNICATION

We follow up each project since the first contact until the mould life cycle ends. A project leader speaking the customer language is always available to support him whenever requested:

- English
- German
- French
- Spanish



In production, the management software **“Organimold”** allows us to monitor all projects by the minute.

Soon this software will enable our customers to check online the progress reports of their project.

# MEXPORTOOLS

Alliance between Ribermold and 3 other Portuguese companies to provide Know-How and improve Human Resources & Technologies in Mexico.

Mexican technicians received training in Portugal.

We offer Portuguese toolmaking and After Sales Service to our customers at CIATEQ Technological Centres.



# TECHNICAL DESIGN DEPARTMENT

## CAD

10 Employees

## WORKSTATION

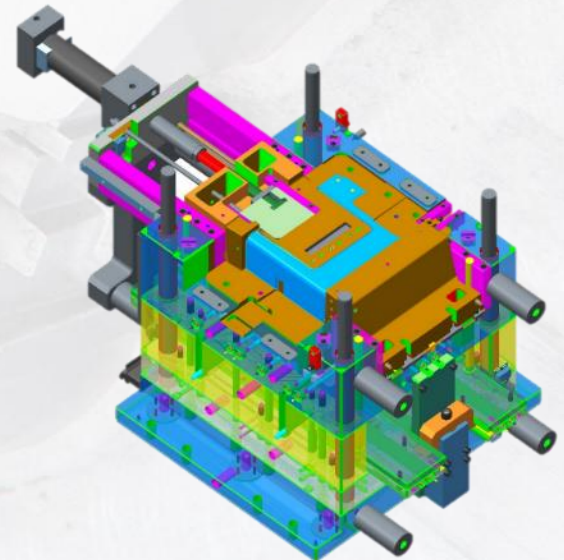
- 2 Moldflow Adviser
- 1 Moldex3D
- 8 Creo (Pro-E)
- 3 AutoCAD (Zw CAD)
- 2 Cimatron
- 1 Catia V5



## CAM

- 4 Employees
- 2 WorkNC
- 3 Cimatron
- 2 DepoCam

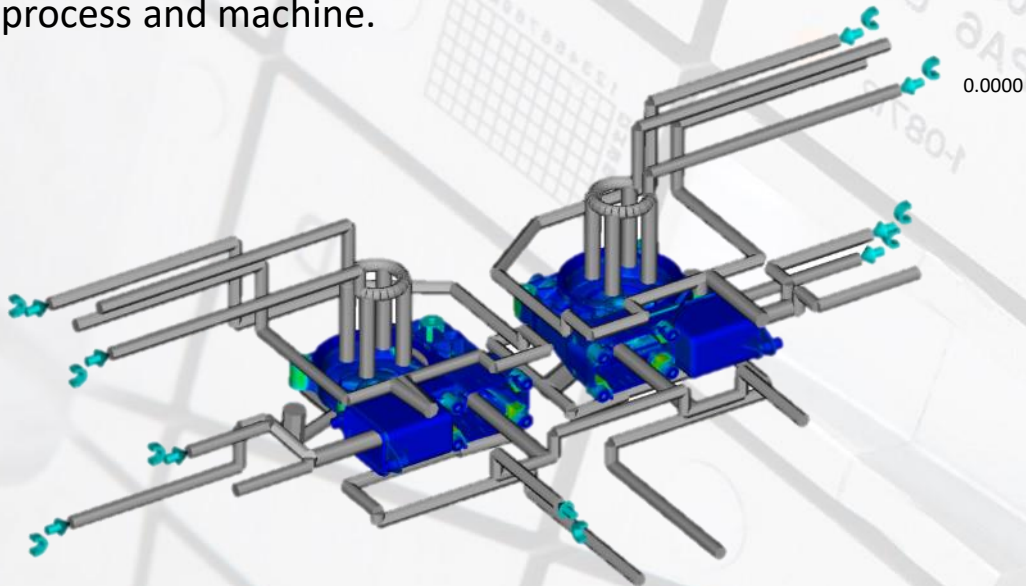
## R&D and Innovation Department





# REVERSE ENGINEERING

We can offer in-house, with **Moldflow Adviser** or **Moldex3D**, a full CAE analysis, providing functional solutions that optimizes the tool, process and machine.



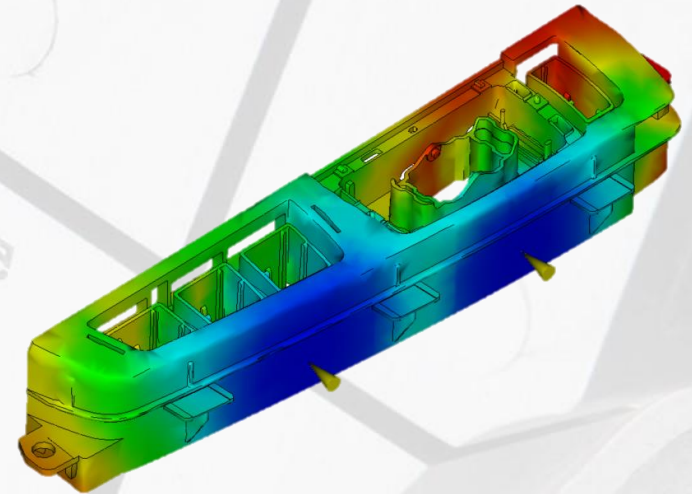
[s] 0.9908

0.7431

0.4954

0.2477

0.0000



Analysing the flow/pack, cooling and warp, we can provide you with a tool that has the best cycle time, and a high quality part with reduced warpage.

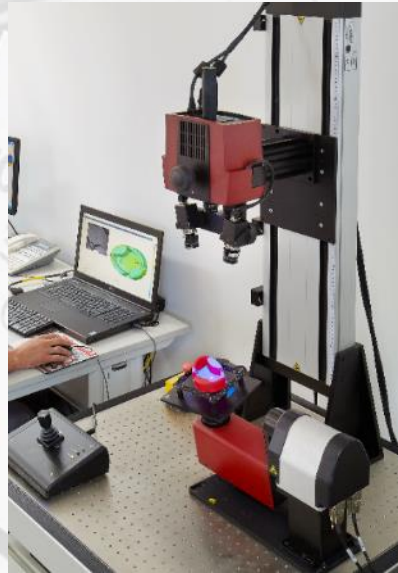


# METROLOGY

**Global S (CMM)  
HEXAGON**



**Atos Compact Scan 5m**



**Zeiss 3d Vista**



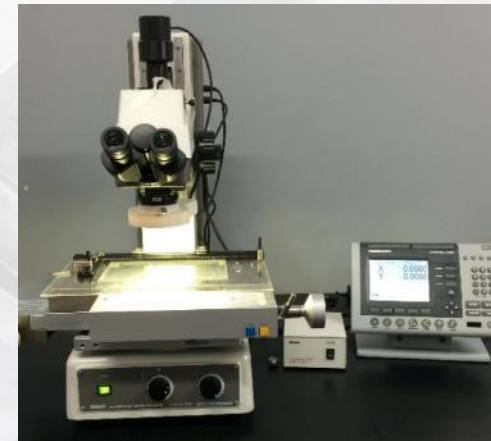
**Werth Video Check**



**Mitutoyo Crysta Apex S7106**

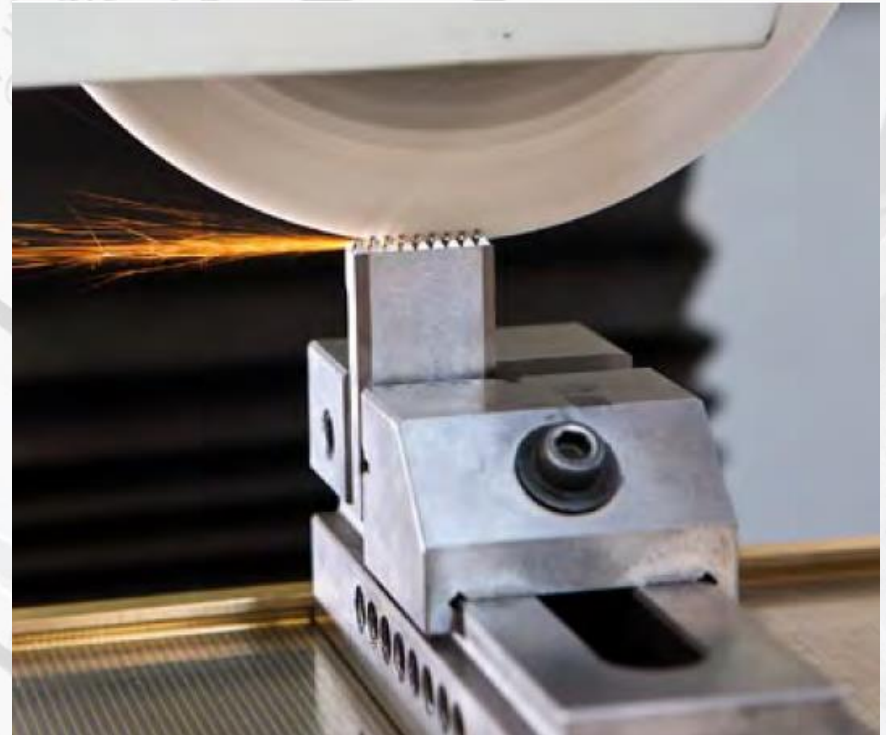


**Microscope Nikon MN-400/S  
Resolution 0.1μm**



# GRINDING DEPARTMENT – High precision

2 machines LIPEMEC with OptiDress system and other conventionals





# EDM DEPARTMENT

2 FULL AUTOMATED FLEXIBLE MACHINING CELL

Zimmer+Kreim with Chameleon robot with:

- **1 CNC High Speed Machine Rödgers RXP500** (100 tool changer), **42.000 rpm**;
- **2 High Speed EDM Centres** with Micro-EDM device Zimmer+Kreim;
- **1 CMM ZEISS VISTA CNC** measuring machine;
- **1 Pallet** transfer and cleaning device;
- **3 Magazines** with capacity for 387 electrodes and 11 pallets for EDM

Wire EDM

Charmilles Robofil

Sodick

FIKUS (SOFTWARE PROGRAMMING)



**Installed in 2006**



# CNC DEPARTMENT

RCM Röders robot with:

- RXP 601 DSH – 5 axis
- RXP 500 DS – 5 axis
- **2 Magazines** with capacity for 12 pallets 300x300 and 30 pallets 150x150
- **Hexagon Global S** 1000x700



# CNC & DRILLING DEPARTMENT

7 CNC machines among is 1 OKK VP9000 5-AXIS



Milling and deep drilling machine 5+1 axis

# HIGH GLOSS POLISH





# FITTING & ASSEMBLING DEPARTMENT

11 skilled technicians

1 spotting machine up to 80t



# TOOL TRIALS, PRE-SERIES & PRODUCTIONS

- 10 injection machines ranging from 55 to 700t.
- Two bi-injection machines 1\_65t KraussMaffei and 1\_700t Engel with Robot and rotating plate incorporated.
- Supplementary: Second injection unit (vertical/horizontal) for our machines / 1 rotative plate adapted for the 250t and 370t injection machines.



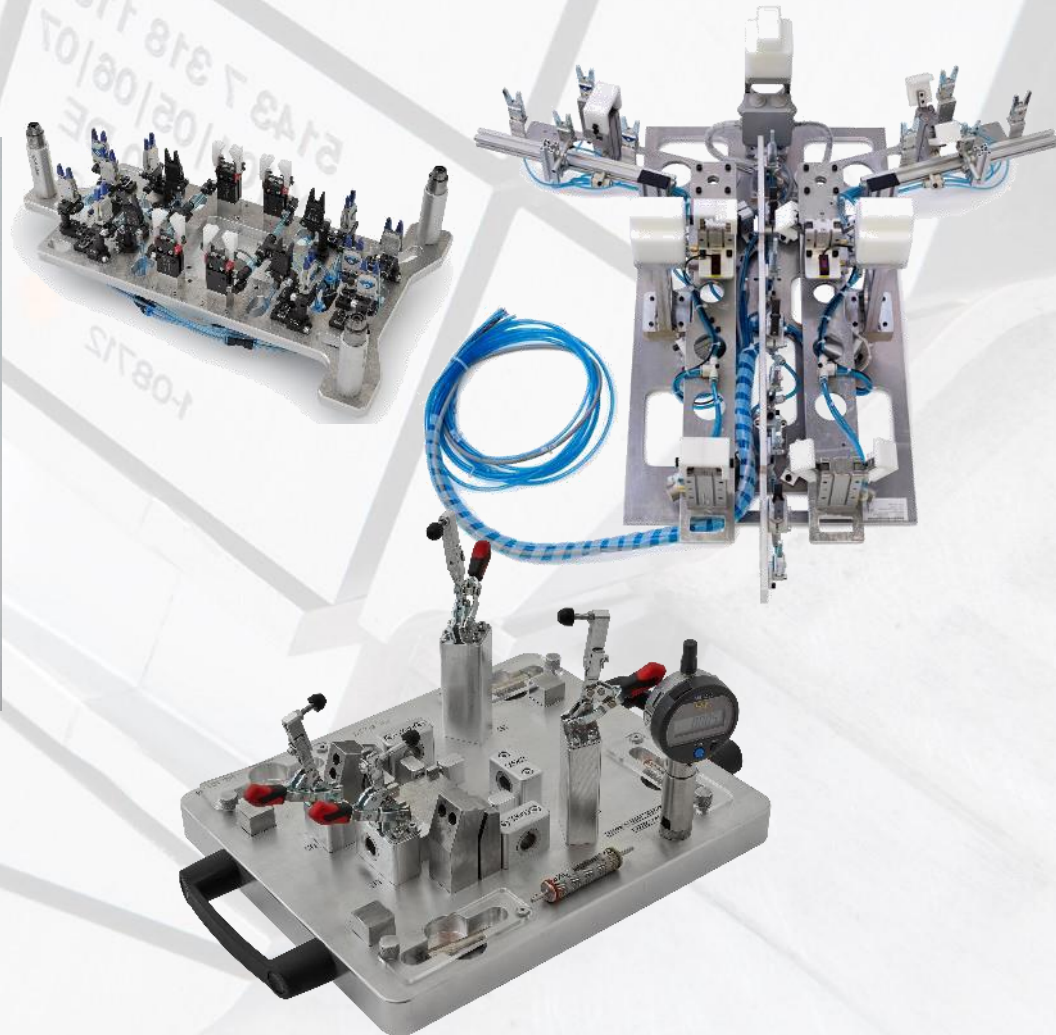
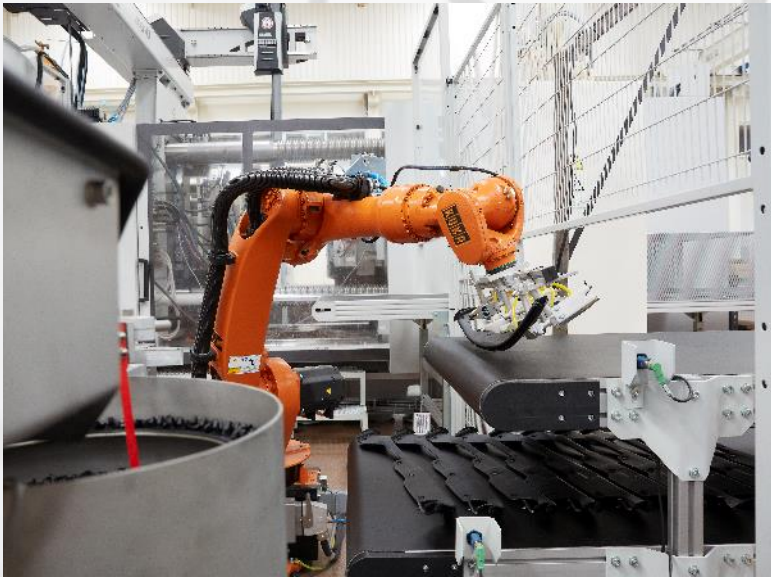
Ribermold has four high qualified injection technicians managing the testing center activities and providing technical assistance to customers during production run&rate validation of the molds.





# TURN-KEY & INTEGRATED SOLUTIONS

Ribermold can also provide Robotic arm, Robot gripper hands and many other services.





# SECTOR OF MOLDS AND PARTS

**AUTOMOTIVE**

**ELECTRIC & ELECTRONICS**

**PACKAGING**

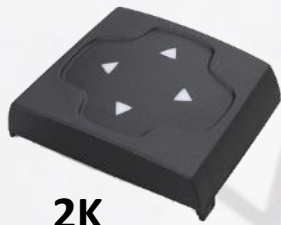
**HOUSEWARE**

**MEDICAL**



# Our portfolio | Automotive Interiors

## Buttons



2K



2K



2K



## Car dashboard



# Our portfolio | Automotive

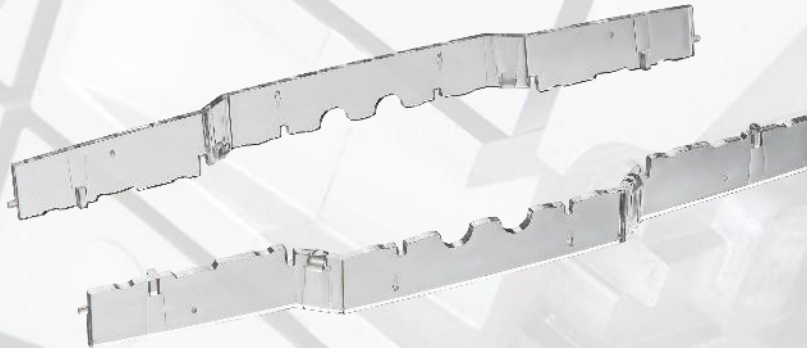
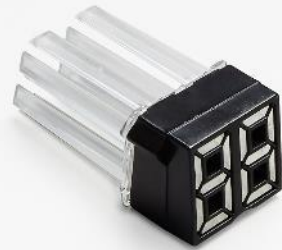
## L2 GM HOUSING & BRP COMPACT HOUSING





# Our portfolio | Automotive Interiors

## LIGHTING



# Our portfolio | Automotive Interiors

## INDUCTION “ROC-TOOL” TECHNOLOGY



**Dash Board Corner**



**Side Venting  
Frame**



**Central Venting  
Frame**

# Our portfolio | Automotive Interiors

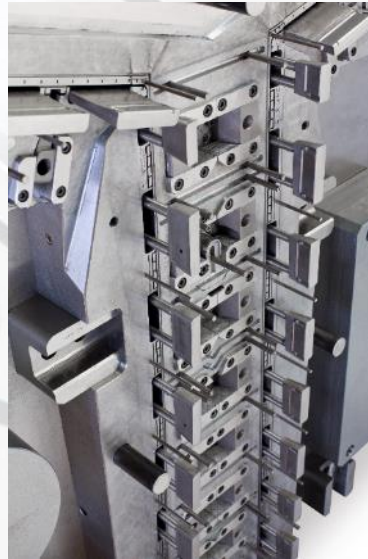
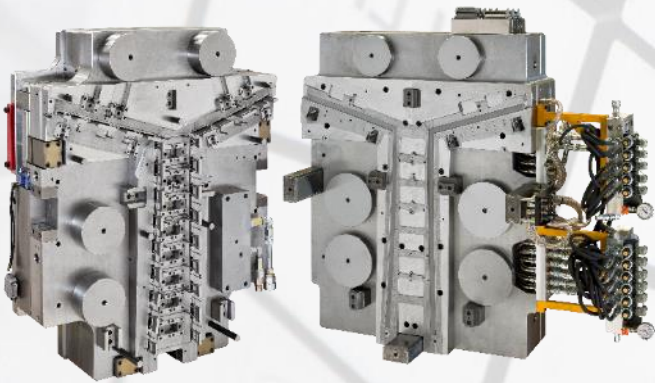
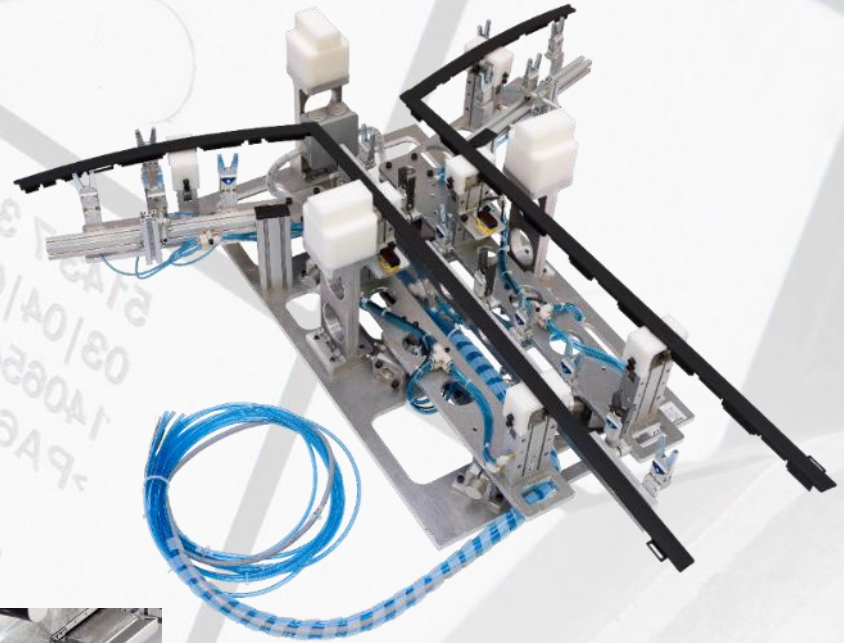
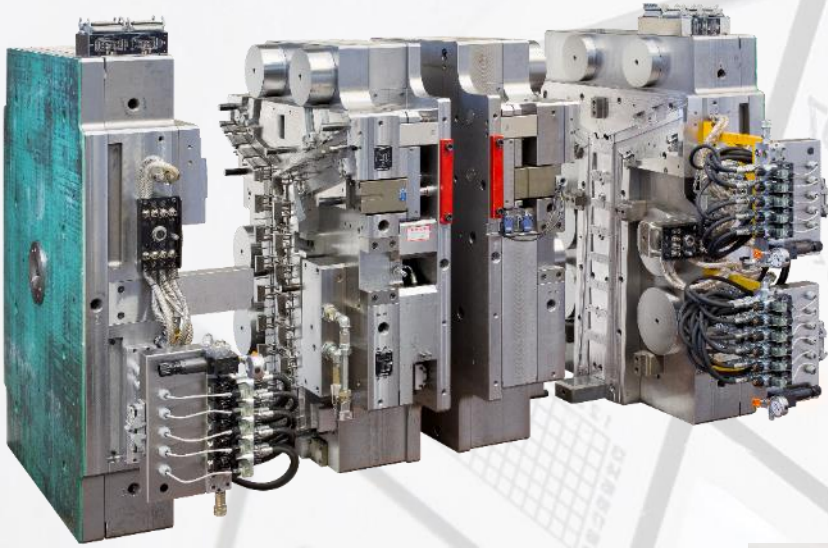
## GRAB HANDLE - GAS ASSIST INJECTION MOULDING





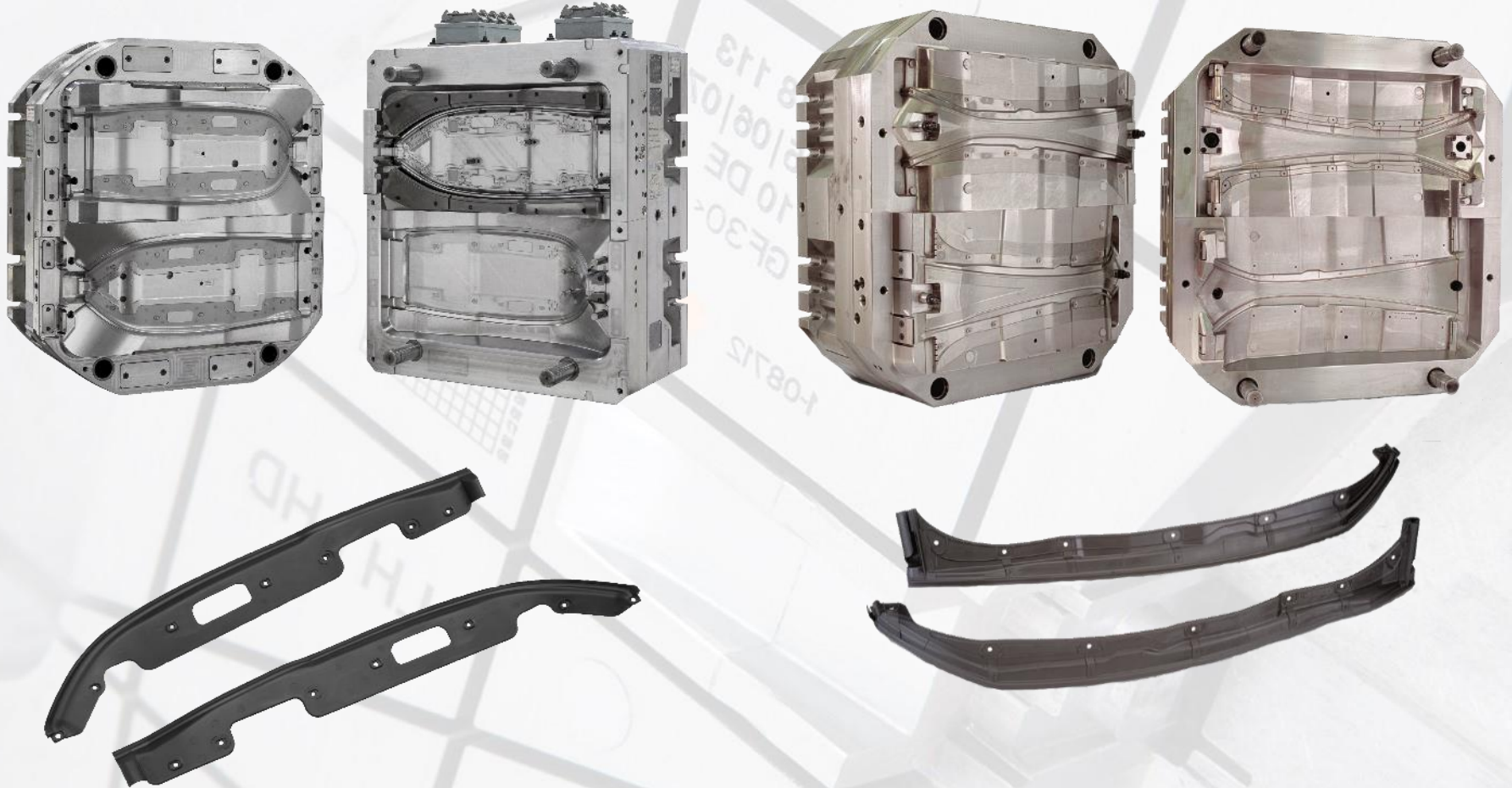
# Our portfolio | Automotive exteriors

## DOOR/GLASS SEAL – 2K



# Our portfolio | Automotive exteriors

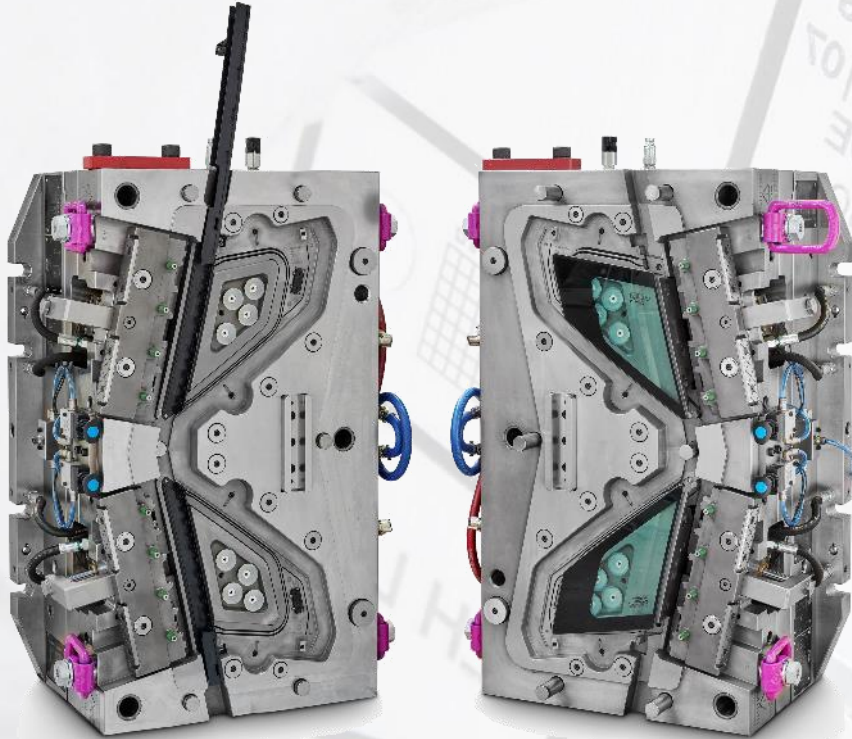
## GAP SEAL DOOR - 2K





# Our portfolio | Automotive exteriors

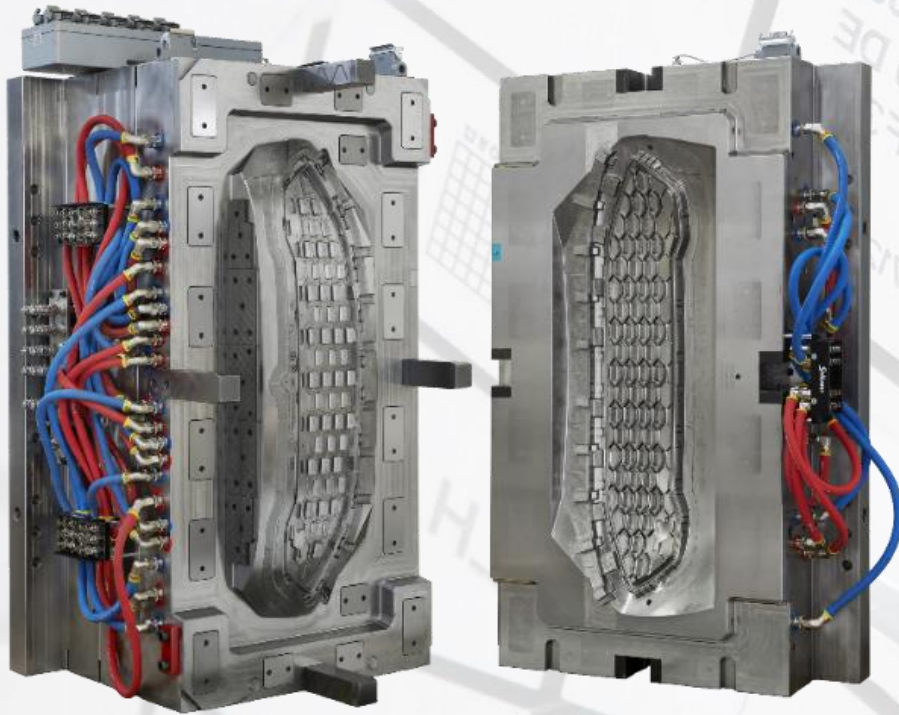
## GLASS ENCAPSULATION



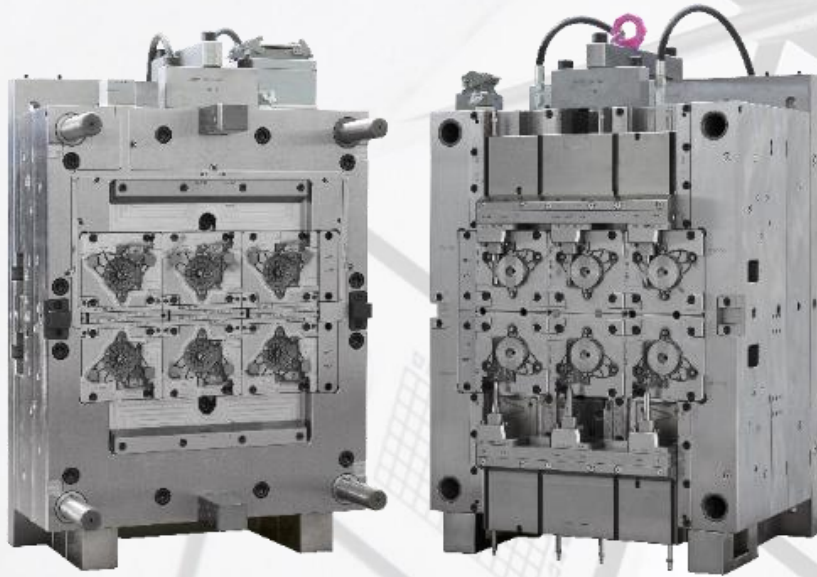


# Our portfolio | Automotive exteriors

## GRIL FRONT BUMPER



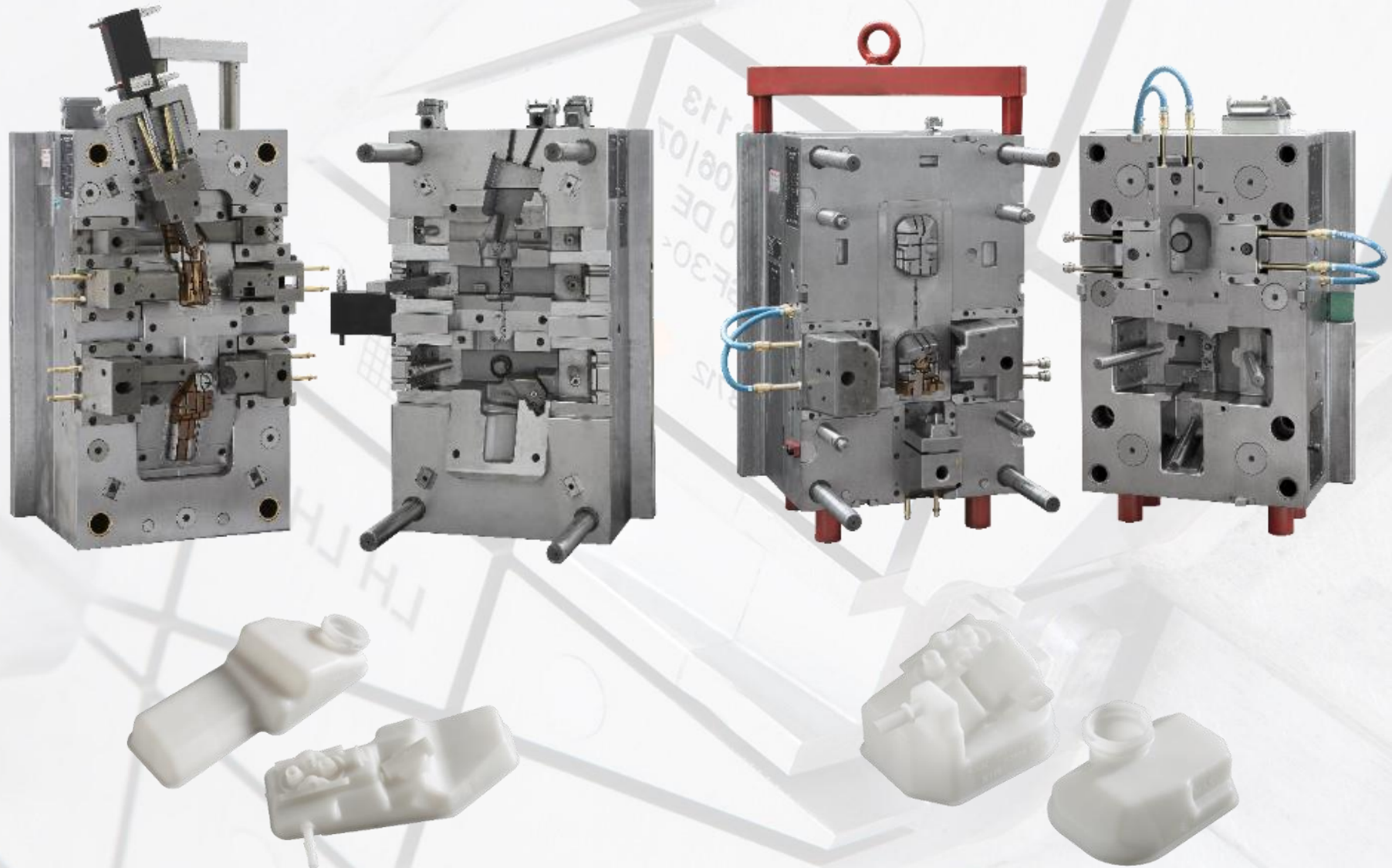
# Our portfolio | Automotive GEAR HOUSING



Insert moulding

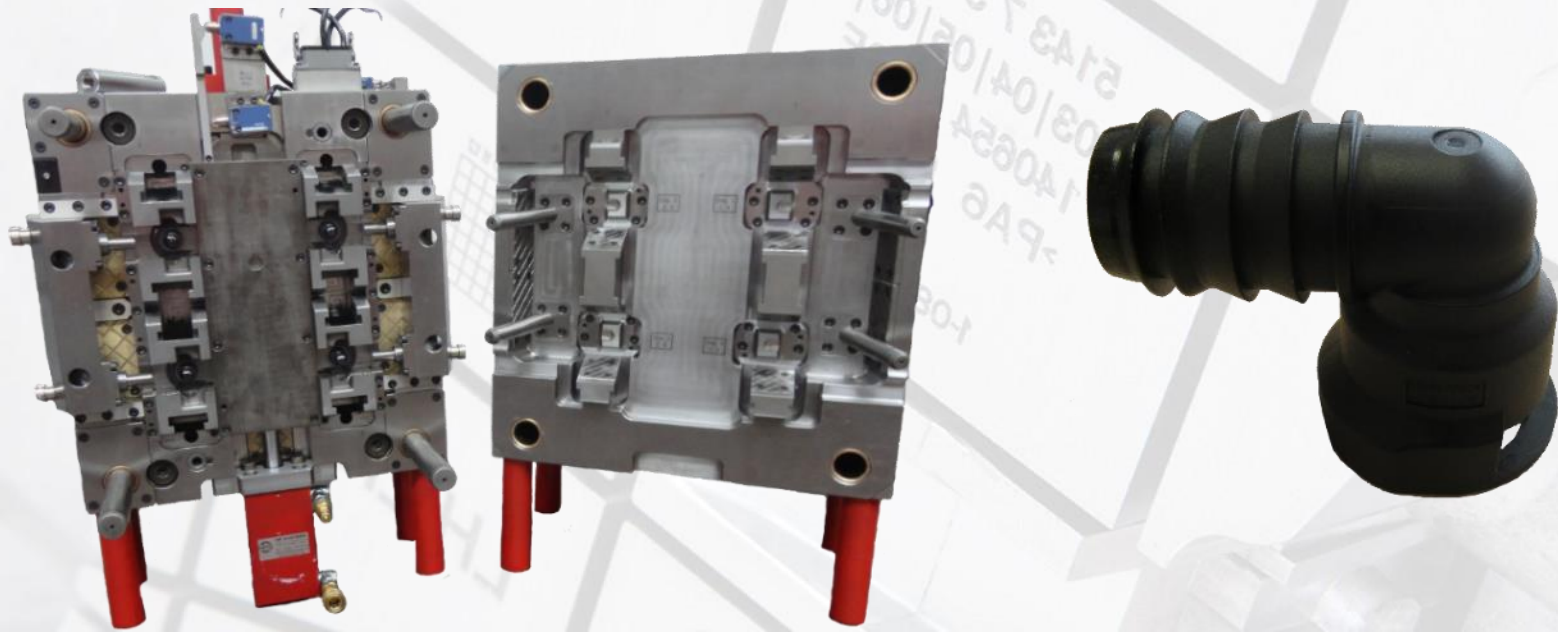


# Our portfolio | Automotive OIL / WATER TANKS

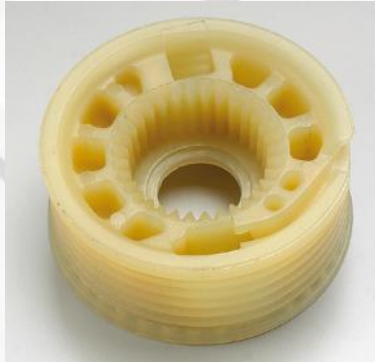




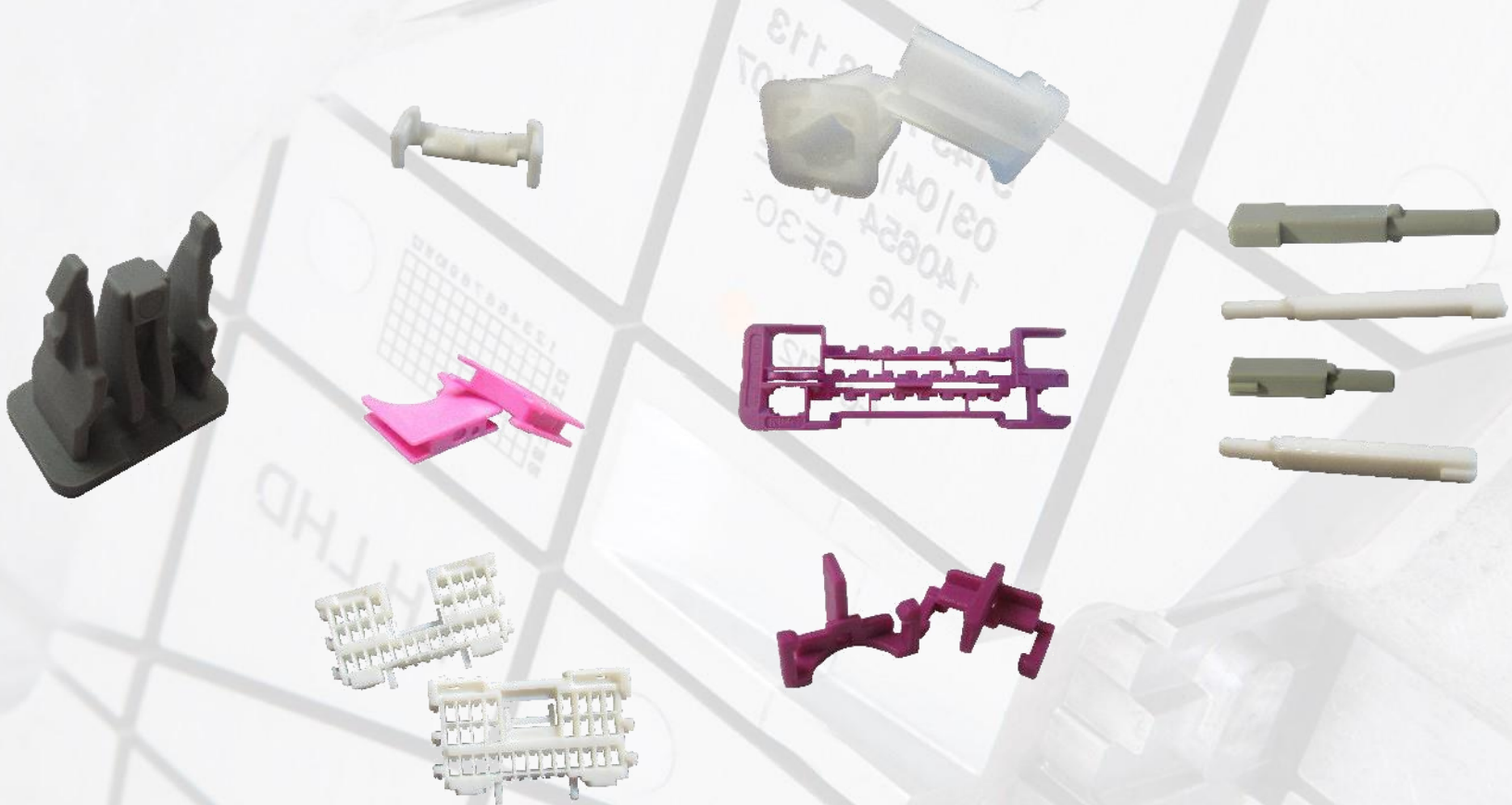
# Our portfolio | Automotive CORNER CONNECTION



# Our portfolio | Automotive TECHNICAL PARTS

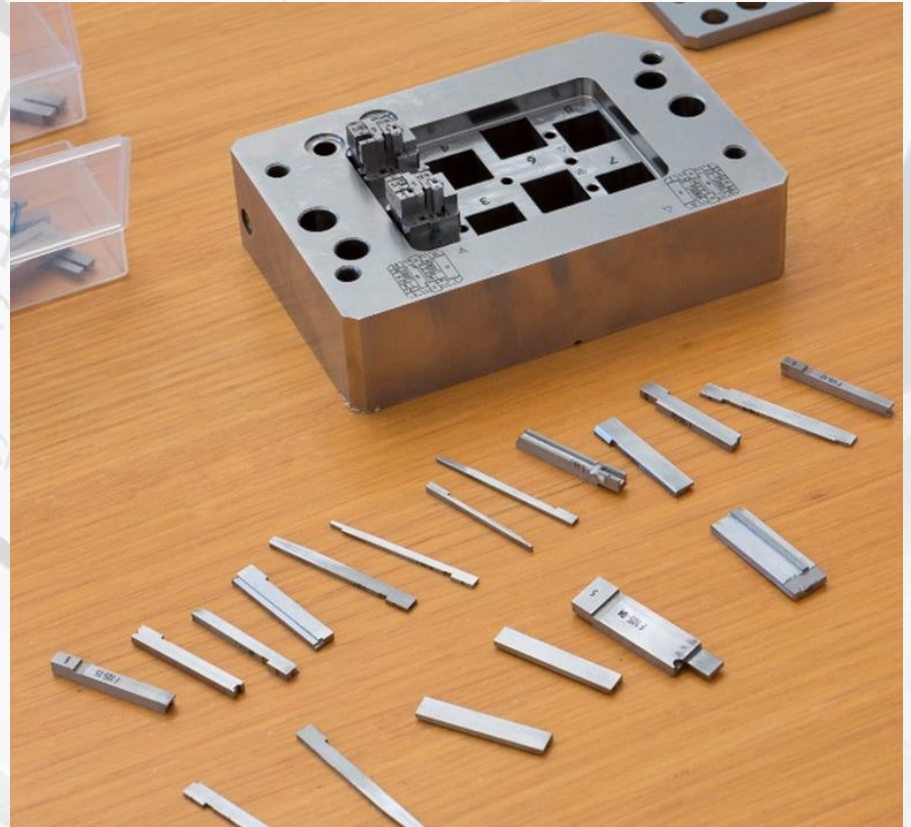
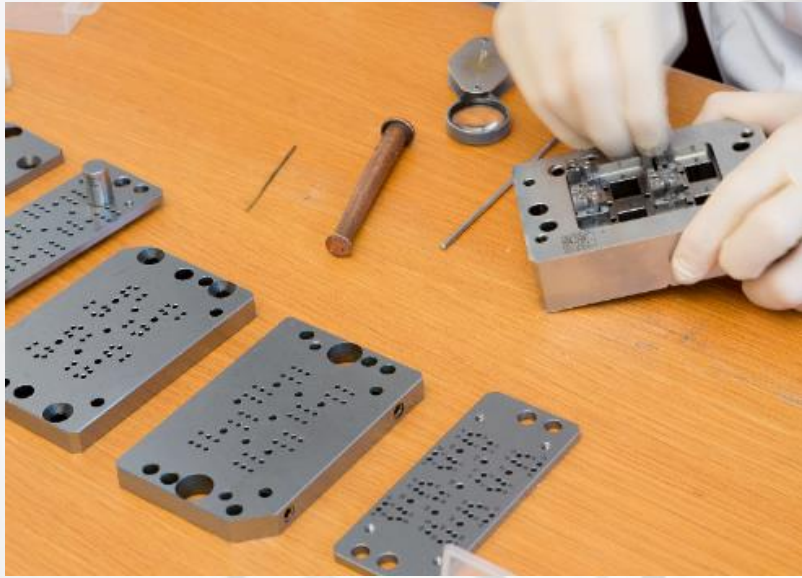


# Our portfolio | Automotive TECHNICAL PARTS





# Our portfolio | Automotive CONNECTORS



**250 inserts**

# Our portfolio | Electric Electronics HOUSING





# Our portfolio | Electric Electronics SUPPORT



5143 7 318 113  
03/04/05/06/07  
140654 10 DE  
-PAG GF30-  
1-081/5

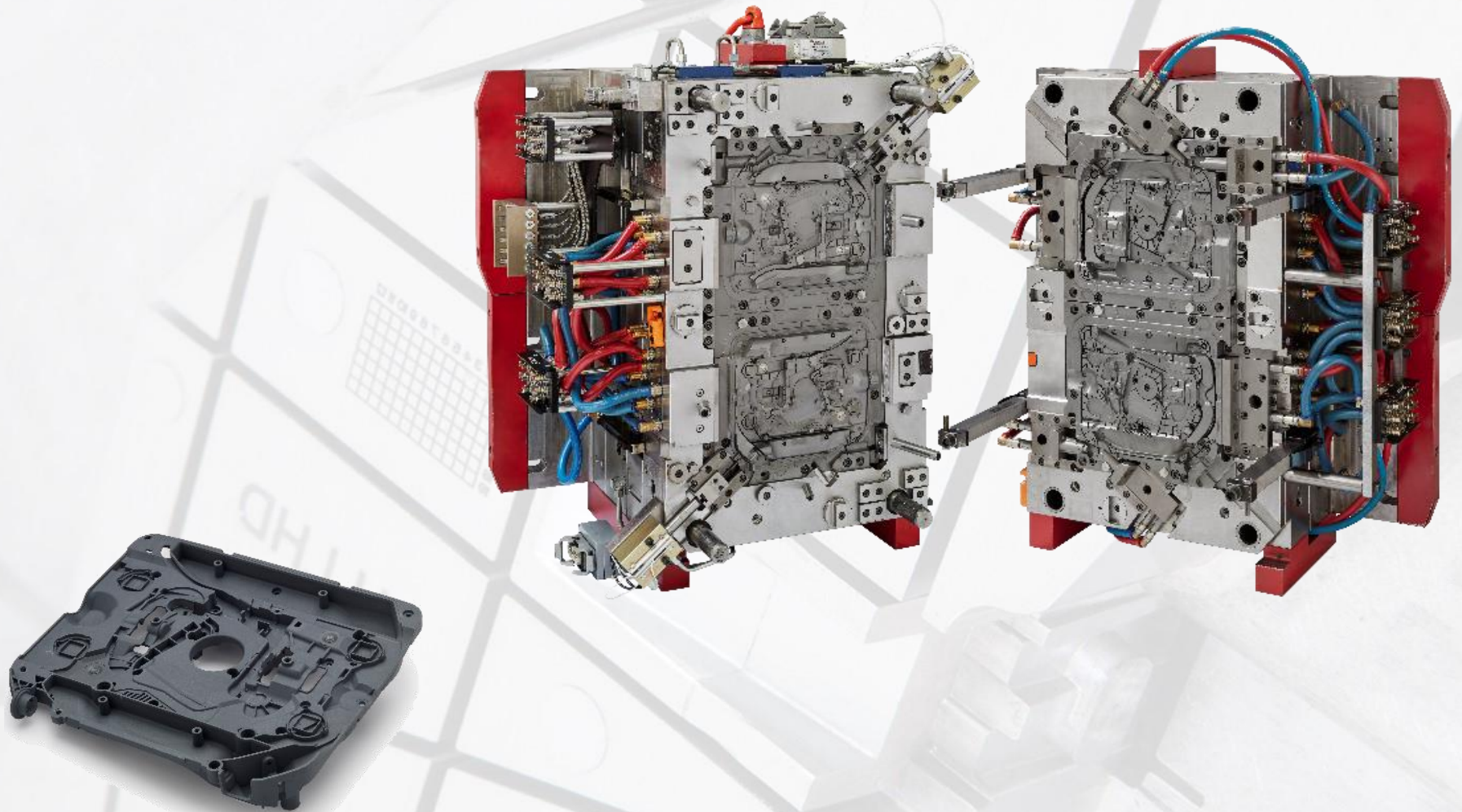




# Our portfolio | Electric Electronics INSERT MOULDING



# Our portfolio | Houseware VACUUM CLEANER CHASSIS



## **RIBERMOLD - High Precision Molds**

Rua da Marinha Pequena, 22

2430 - 350 Marinha Grande

Portugal



**Tel.:** +351 244 573 080

**Email:** [comercial@ribermold.pt](mailto:comercial@ribermold.pt)

**Homepage:** [www.ribermold.pt](http://www.ribermold.pt)



Thank you  
for your attention!